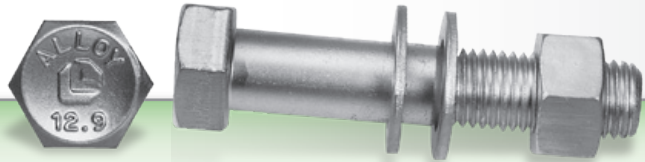


PROBLEM SOLVER

PROBLEM:

Ordinary bolts and mismatched fasteners are easily damaged.

- Ordinary and mismatched fasteners can fail in a maintenance application.



SOLUTION:

Lawson Metri-12 Fastening System

- Maintenance engineered with matched strength components.
- Highest-grade steel cap screws and hex nuts will not break, strip bend, or elongate.

CAP SCREW FEATURES:

- 1,242 MPa (180,000 PSI) ultimate minimum tensile strength
- Higher hex head
- Rolled threads – MJ profile.
- Chamfered point
- Conforms to ISO 4014 and 4017 specifications.

CAP SCREW BENEFITS:

- Reduced possibility of bolts breaking or stripping.
- Easier wrenching.
- Greater resistance to thread fatigue.
- More efficient assembly.

HEX NUT FEATURES:

- Heat-treated
- Extra thick
- Polymer-coated threads

HEX NUT BENEFITS:

- Higher wrench pads mean less wrench slippage.
- Reduced chance of hex nut stripping.
- Requires less torque to generate consistent clamp loads.

FLAT WASHER FEATURES:

- Thru-hardened
- Size marked on washer face
- Highly controlled dimensions

FLAT WASHER BENEFITS:

- Maximum clamping load without dishing or warping.
- Provides a smooth bearing surface for load distribution.
- Fully-formed washer face for maximum seating ability.

INDUSTRIES:

- Automotive
- Agriculture

- Food Processing
- Mining